

**Improved design & innovation...**

# **Multi purpose aluminium solar panel rail kit...**

**True Solar Time's NEW  
'Multi-Purpose Solar Panel Rail'  
has been designed to overcome the  
difficulties that installers face when  
cabling and earthing panels, tilting  
panels and conforming to the  
Australian Standards and the  
Clean Energy Council Guidelines.**

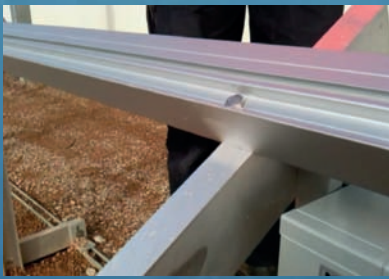


**TRUE SOLAR TIME**  
spiden electrical services



**Call us today 03 9737 9115**  
[www.truesolartime.com.au](http://www.truesolartime.com.au)

Click link below to view demonstration  
<http://www.youtube.com/watch?v=DGPBJodpW8o>



The panel rail will bolt to any other base structure.

Click link below to view demonstration  
[http://www.youtube.com/watch?v=OH\\_lrl4DzNc](http://www.youtube.com/watch?v=OH_lrl4DzNc)



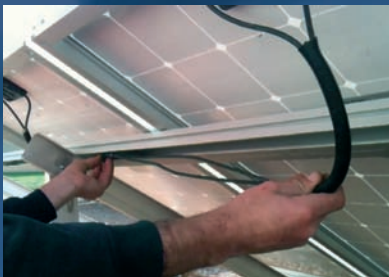
The same panel rail can be used as the base structure (tilt frame) and the solar panel rail.

Click link below to view demonstration  
<http://www.youtube.com/watch?v=PmWSerf6Qmc>



Design accommodates for structural not interfere with the positioning of the solar panels

Click link below to view demonstration  
<http://www.youtube.com/watch?v=g2eiCits9EI>



Provision for string wiring



**TRUE SOLAR TIME**  
spiden electrical services

## Key features of the Multi- Purpose Solar Panel Rail are:

- Designed and Manufactured in Australia for Australian Installers.
- Engineered to suit AS/NZ 1170.2 Standards and Clean Energy Council Guidelines.
- Anodised Aluminium for long life. 10 year Warranty.
- Cable duct facility incorporated in the design.
- No specialised fixings required. Off the shelf standard bolts M8 or 5/16th can be used.
- The all purpose design can be used as a panel rail and/or tilt frame structure. The same components are used to perform both functions.
- All earthing issues have been accommodated for.

## Benefits include the following:

1. All string cabling can be neatly positioned into the open cable duct provided. This duct is incorporated into part of the structure of the rail. Cabling can be laid in this duct after the panels are mounted and wiring is strung together. The cable duct dimensions have been designed to have an interference fit with the cabling and connectors, therefore helping the cabling to stay in place. Any alterations to the cabling is as simple as removing the cabling from the duct. There is no need to remove the panels to carry out the alterations. This is advantageous when extra panels need to be introduced to the string wiring. It also makes life easier for the installer who faces the challenge of trying to keep all string wiring off the roof structure.
2. It eliminates conduit, cable tying and cable ducting which are all subjected to UV radiation degradation.
3. It is structurally designed to accommodate wind speeds up to 60 m/per sec.
4. The same rail is used to create the tilt frame structure and the panel rail structure. It can be easily bolted together using the additional features that are built into the shape of the rail.
5. When the panel rail is mounted flat on the tilt frame, the bolts that fix the panel rail to the tilt frame have an allocated recessed position in which to sit. This part of the design allows the panels to be mounted anywhere on the surface without the head of the bolts interfering with the position of the panels on the rail.
6. The engineered design of the extrusion allows the installer to use M8 metric bolts or 5/16th imperial bolts, therefore the head of the bolt has a set clearance on either side to the walls of the extrusion. This clearance allows the bolt to slide freely along the bolt groove but will not allow the head of the bolt to spin under torque load. The advantage of this is that if the installer misplaces a quantity of the M8 or 5/16th bolts they are easily replaced by visiting a local bolt supplier.
7. Our mounting frame kits include all components required to meeting the Australian Standards and Clean Energy Guidelines.
8. Our kits are now being used by major installers. For example:
  - Alternate Power Systems who has over 15 years experience in the commercial/domestic field.
  - The kits are also being incorporated in the domestic field.
  - It has also been incorporated in a major engineering project, the "NHP Sustainability Centre" in Laverton, Victoria, where it has the approval of the Engineering Department.



**Call us today 03 9737 9115**  
[www.truesolartime.com.au](http://www.truesolartime.com.au)